

# Centros™

*Superior Flow & Self-Centering by Design*

THE NEXT GENERATION SPLIT TIP CATHETER DESIGN FROM DR. STEPHEN ASH



**ANGIODYNAMICS®**

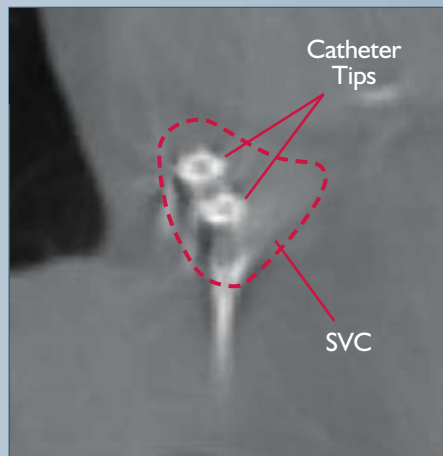
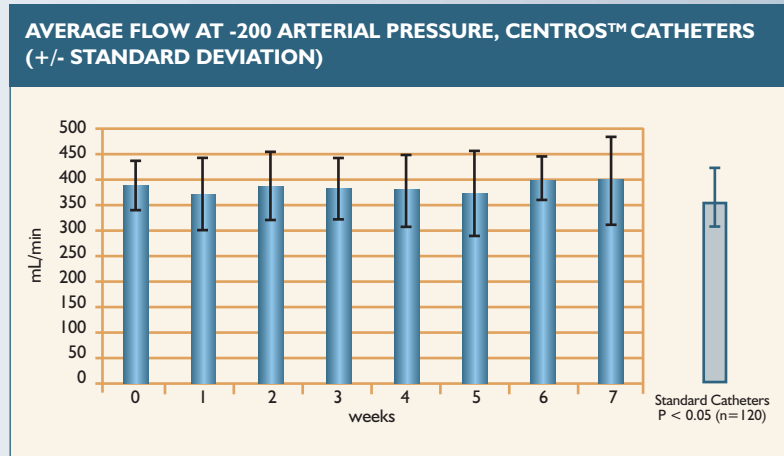
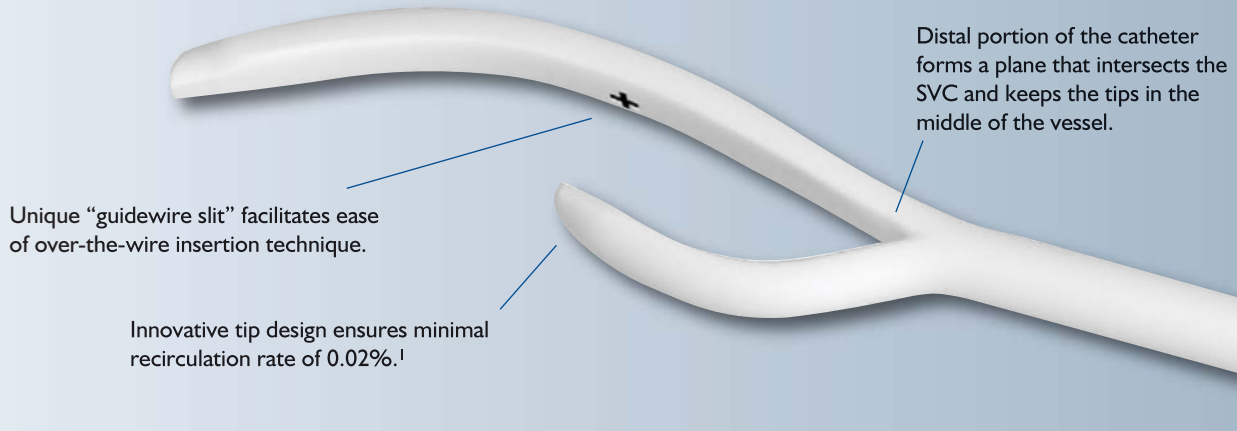
INCORPORATED





Introducing Centros™, the next generation, self-centering, split tip dialysis catheter from Dr. Stephen Ash.

Highly innovative 15F Centros™ catheter design features preformed curved tips which automatically center the catheter within the vessel to maintain optimal blood flow and minimal recirculation rates.



Clinical trial data demonstrates superior flow rates of 401 mL/min at 7 week follow-up compared to a control group of competitive catheters at 348 mL/min.<sup>2</sup>

Catheter ports are supported in the middle of the blood flow, eliminating the need for side holes and potentially reducing the likelihood of sheathing and clot formation.

1. Data on file.  
2. Preliminary Study of a Self-Centering Central Venous Catheter for Dialysis; ISET 2008.

**PRODUCT ORDERING SPECIFICATIONS**

Catalog Number	Description	Tip to Bifurcate	Tip to Cuff	Units/Box
10303101	Centros Anatomical Curve Basic	24cm	19cm	1
10303102	Centros Anatomical Curve Basic	28cm	23cm	1
10303103	Centros Anatomical Curve Basic	32cm	27cm	1

**Basic Kit includes:** (1) Centros™ hemodialysis catheter, (1) # 15 blade disposable scalpel, (1) 18 ga introducer needle, (1) 0.035" x 90cm J/Flex guidewire with 10cm markings, (1) adhesive wound dressing, (1) 12F vessel dilator, (1) 14F vessel dilator, (1) tunneler assembly, (1) 16F valved peel-away introducer sheath, (2) injection caps